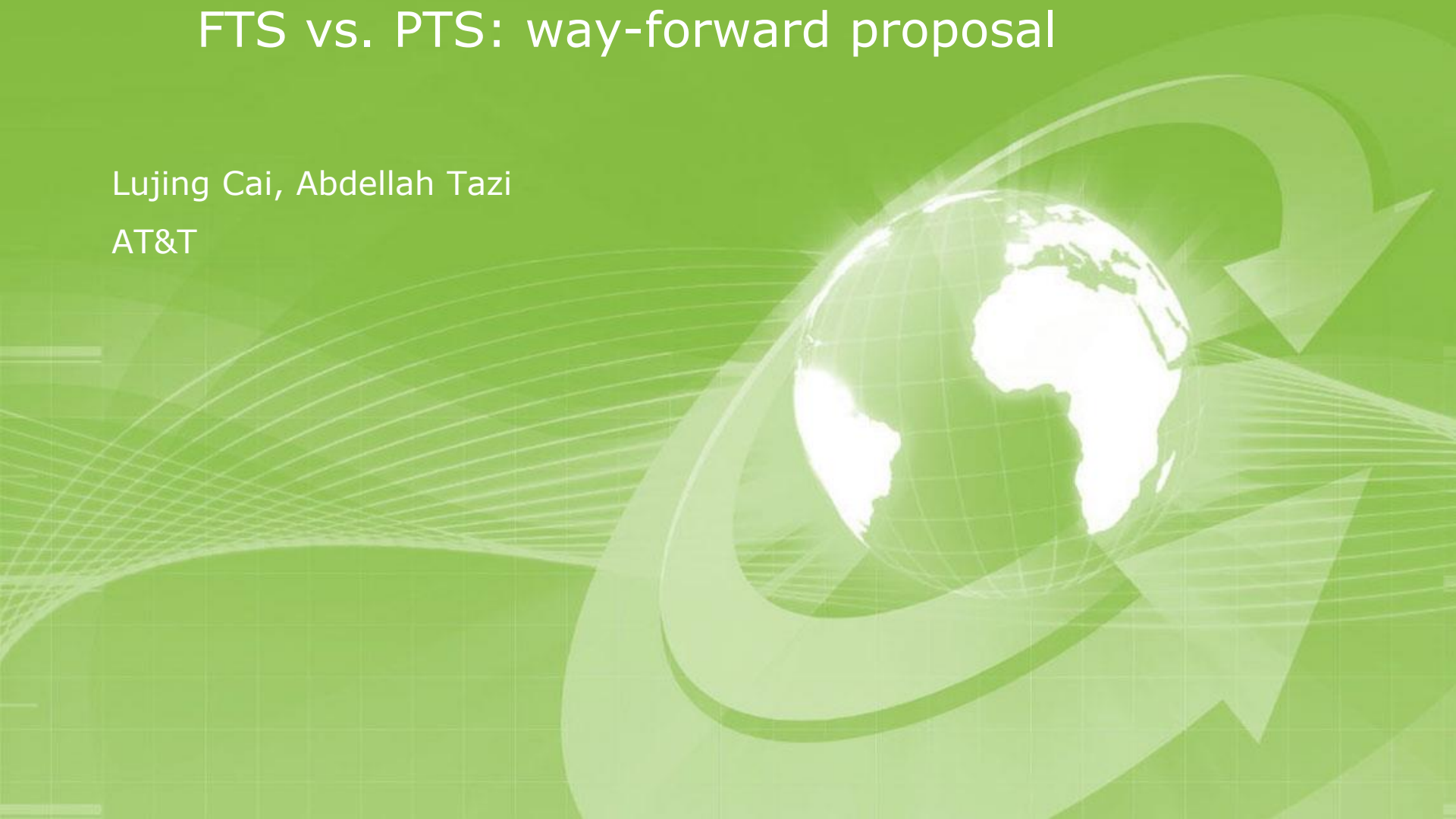


FTS vs. PTS: way-forward proposal

Lujing Cai, Abdellah Tazi
AT&T



Compliance with IEEE Standards Policies and Procedures

Subclause 5.2.1 of the *IEEE-SA Standards Board Bylaws* states, "While participating in IEEE standards development activities, all participants...shall act in accordance with all applicable laws (nation-based and international), the IEEE Code of Ethics, and with IEEE Standards policies and procedures."

The contributor acknowledges and accepts that this contribution is subject to

- The IEEE Standards copyright policy as stated in the *IEEE-SA Standards Board Bylaws*, section 7, <http://standards.ieee.org/develop/policies/bylaws/sect6-7.html#7>, and the *IEEE-SA Standards Board Operations Manual*, section 6.1, <http://standards.ieee.org/develop/policies/opman/sect6.html>
- The IEEE Standards patent policy as stated in the *IEEE-SA Standards Board Bylaws*, section 6, <http://standards.ieee.org/guides/bylaws/sect6-7.html#6>, and the *IEEE-SA Standards Board Operations Manual*, section 6.3, <http://standards.ieee.org/develop/policies/opman/sect6.html>

**IEEE [WG Project #]
[WG Name]
[WG Chair Name and Email]**

FTS vs. PTS: way-forward proposal

Date: 2019-01-10

Author(s):

Name	Affiliation	Phone [optional]	Email [optional]
Lujing Cai	AT&T		lc779g@att.com
Abdellah Tazi	AT&T		

Proposed way forward

- Requirement for Fronthaul (NGFI-I) and midhaul (NGFI-II) should be specified separately, considering differences in network topology, transport distance, and timing requirement
- For NGFI-I (fronthaul), ITU-T G.8275.1 (FTS) is mandatory while ITU-T G.8275.2 (PTS) is optional
- For NGFI-II (midhaul), the standard specifies the requirement as it is today (either G.8275.1 or G.8275.2 shall be supported)

Illustration of proposed way forward

