

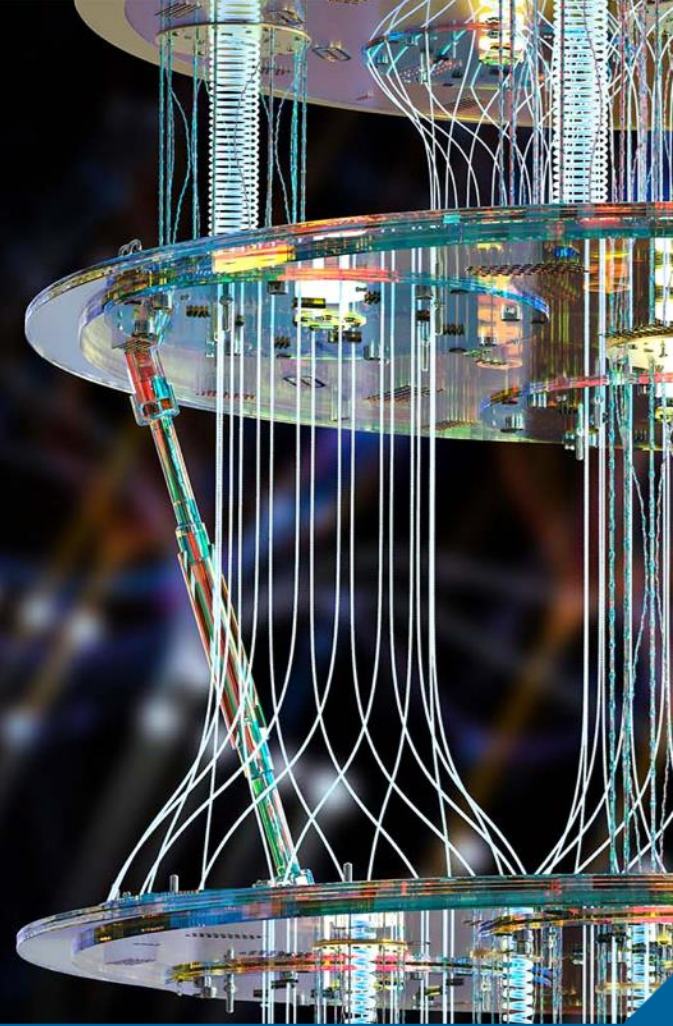


Introducing the IEEE Fellow Standards Contributor Category

Dan Sabin, P.E., IEEE Fellow (2016)

Alex Gelman, IEEE Fellow (2018)

IEEE Standards Association Fellow Nominations Support Committee
5 November 2025



IEEE Fellow Elevation



- The Fellow grade of membership is the highest level of IEEE membership and is conferred by the IEEE Board of Directors in recognition of a high level of demonstrated extraordinary accomplishment and recognizes “significant technical contribution” to the profession and society.
- Fellow recommendations by the IEEE Fellow Committee in any year must not exceed 0.1% of the IEEE voting membership on record as of December 31 of the preceding year. As of October 2025, there were 7867 Fellows in the IEEE Fellow Directory. In comparison, IEEE just announced that now it has more than 500k members.
- The grade of Fellow cannot be applied directly by the nominee. The candidate must be nominated by others.
- The IEEE Fellow nomination form requires two individual contributions with verifiable evidence from the following five contribution categories: Technology Innovator, Educator, Research Engineer/Scientist, Technical Leader, **Standards Contributor** (New for Class of 2024)
- Fellow Elevations / Applications (All Categories): Class of 2024: 323 / 949 (34%) | Class of 2025: 338 / 1058 (32%).
- Fellow Elevations / Applications (Standards Contributors): Class of 2024: 6 / 13 (46%) | Class of 2025: 11 / 30 (37%).
- Why Become a Fellow? Professional Recognition, Enhanced Career Opportunities, Increased Visibility and Influence, Increased Networking, Opportunity to Join IEEE Fellow Evaluation Committees, Personal Satisfaction and Prestige

IEEE Fellow Nomination Categories

Category	Examples of Contributions
Technology Innovator (TI)	Product development, advancement in system, application or operation, project management or construction activity, process development, manufacturing innovation, codes or standards development, or other application of technology
Educator (EDU)	Advances in electrical engineering and scientific technology through education by developing innovative and unique curricula and/or courses
Research Engineer/Scientist (RE/S)	Inventions, discoveries or advances in state-of-the art of technology
Technical Leader (TL)	Managerial, team, or company-wide effort using technical innovation, and resulting in outstanding performance, economic enhancements, or other advantages to benefit society
Standards Contributor (STDC)	Development of standards definitions, and frameworks architectures standards development leadership; direct or indirect contributions to standards

IEEE Fellow Standards Contributor Category

Individual Contributions/Evidence of Technical Accomplishment

From the IEEE Fellow Committee Operations Manual (November 2024):

- “Standards Contributors may (a) define the framework, reference, functional or design architectures for a standard or family of standards, or (b) demonstrate strong technical skill in leading a standards project or task or in building technical consensus.
- Original technical content may directly or indirectly contribute to a standards project, which ultimately is adopted into a published standard or widely accepted specifications.
- Evidence of contribution(s) may come from the IEEE SA Contributor Collection, Internet Engineering Task Force’s (IETF’s) RFC, and/or other Standards Development Organizations’ or alliances’ publications certifying individual contributions, or working group meeting minutes.
- Evidence of significant individual global impact on Society of their contributions may include the Nominee’s role in development of the standard, as shown by reference and endorser testimony, related publications and patent activity, IEEE or other awards with citations to the standard; and broader impact of the standard, including functional, scientific, economic, market and societal aspects.
- Quality and quantity of scholarly publications is not necessary for this category and lack thereof must not penalize the Nominee”

Example of Contribution Combinations

Contribution 1	Contribution 2	Example Persona
Standards Contributor	Standards Contributor	A working group volunteer who architected or authored major contributions to two distinct standards that have large industry impact
Educator	Standards Contributor	An educator who developed innovative curricula that were later incorporated into one or more standards
Research Engineer/ Scientist	Standards Contributor	A researcher who advanced an impactful technology and later led the incorporation of that technology or related works into one or one or more standards
Standards Contributor	Technical Leader	A standards developer with major contributions to an impactful standard that promoted use or adoption of the standard by multiple companies or other standards development organizations at a local, national, regional, or global level
Technology Innovator	Standards Contributor	A product developer who architected/engineered an impactful technical solution in a product who later collaborated with industry partners to develop common requirements that were described in specifications, codes, or standards.

For more information about Standards Contribution Profiles, see the “IEEE SA FelCom Guidance for Standards Contributors Seeking Elevation to IEEE Fellow Grade” at <https://sagroups.ieee.org/felcom/resources/>.

Examples for Evidence of Technical Accomplishment Requirement

- Direct or indirect contributions to standards, including but not limited to IEEE standards
- Leadership in standardization of new technologies, standards committees and/or subcommittees
- Nominations and endorsements providing additional confirmation of evidence of the impact of contributions when the public availability of verifiable evidence of impact is limited. For Fellow references, see <https://www.ieee.org/membership/fellows/fellows-directory>.
- Contributions to pre-standards incubation activity in **IEEE SA Industry Connections** activities: proposals for standards, white papers, peer-reviewed guides and position papers, workshops, databases, and more. See <https://standards.ieee.org/industry-connections/>
- Contributions to open source related to standards, especially IEEE Open Source incorporated into IEEE standards. See **IEEE SA Open** at <https://saopen.ieee.org/>.

IEEE Fellow Nomination

- Nomination Period: The Fellow Portal opens in November for nominations for the following year's class. The nomination deadline is 7 February at 11:59 PM Eastern Time.
- Requirements for Nominee (Effective 1 November 2025)
 - Shall hold Senior Member grade at the time the nomination is submitted
 - Shall have 15 years or more of professional experience
 - Shall have been a member in good standing in any grade for a period of five years or more preceding 1 January of the year of elevation.
- Resources: IEEE Fellow Program Overview and Nomination Form:
<https://www.ieee.org/membership/fellows/>

IEEE Senior Membership

To apply for IEEE Fellow, a candidate must be an IEEE Senior Member. Senior Member is the highest grade for which IEEE members can apply. IEEE members can self-nominate or be nominated. The IEEE Senior Member Program Overview and Nomination Form is www.ieee.org/membership/senior/

Benefits:

- Recognition by Peers for Technical and Professional Excellence.
- Leadership Eligibility: Senior members are eligible to hold executive IEEE volunteer positions.
- Candidate References: Senior members can serve as a reference for other applicants for Senior membership.
- Review Panel: Senior members are invited to be on the panel to review Senior member applications.
- Letter of Commendation
- Announcements in the Section/Society, Local Newsletters, and Newspapers
- Senior Member Engraved Plaque
- Complimentary Society Membership: You may join one new IEEE Society for one year

Eligible Candidates Must:

- Be engineers, scientists, educators, technical executives, or originators in IEEE-designated fields
- Have experience reflecting professional maturity
- Have been in professional practice for at least 10 years (with some credit for certain degrees)
- Show significant performance over a period of at least 5 of their years in professional practice

IEEE Standards Association Awards

From the IEEE Fellow Committee Operations Manual (November 2024): “Evidence of significant individual global impact on Society of their contributions may include the Nominee’s role in development of the standard, as shown by reference and endorser testimony, related publications and patent activity, IEEE or other awards with citations to the standard...”

IEEE Standards Association recognizes outstanding achievements through various award categories, including these awards that can be presented to individuals:

- IEEE SA Conformity Assessment Award: Can be presented to an individual or entity
- IEEE SA Emerging Technology Award: Can be presented to an individual, working group, or company
- IEEE SA International Award
- IEEE SA Lifetime Achievement Award
- IEEE SA Standards Board Distinguished Service Award
- IEEE SA Standards Medallion

The nomination period is 1 February – 31 July each year. See <https://standards.ieee.org/about/awards/>

IEEE SA Fellow Nominations Support Committee (FelCom)

- Charter: To raise awareness and consideration of the technical merit of standards contributions and individual contributors for elevation to IEEE Fellow.
- Mission: To assist IEEE SA Standards Participants with an extraordinary record of accomplishments through the IEEE Fellows Nomination process.
- Offers guidance for nominees, nominators, referrers, and endorsers
- Website: <https://sagroups.ieee.org/felcom/>
- Links to IEEE Fellow Forms, Instructions, Directory, Nominator Guides, Reference/Endorser Guides, FAQ
- Links to “IEEE SA FelCom Guidance for Standards Contributors Seeking Elevation to IEEE Fellow Grade” <https://sagroups.ieee.org/felcom/resources/>
- For help or to guidance on how to start the nomination process: SAFelComHelp@ieee.org
- Note: IEEE SA FelCom is not an IEEE Fellow Evaluation Committee. Fellow Evaluation Committees are under an IEEE Society or Council.

2025/2026 Members

- Doug Zuckerman (Chair)
- Alex Gelman (Vice Chair)
- Stephen Dukes
- Rob Fish
- Roger Fujii
- Daleep Mohla
- Paul Nikolich
- Damir Novosel
- Dan Sabin (SA Rep to TA)
- Mathini Sellathurai

How can the IEEE SA Fellow Nominations Support Committee (FelCom) Help?

Nominees can contact FelCom to:

- Help to start the process
- Help identify major achievements that likely qualify for Fellow elevation
- Offer guidance on picking a nominator, references and endorsers

Nominators can contact FelCom to:

- Summarize the nomination process
- Offer guidance for making strong nominations
- Offer guidance on picking references and endorsers
- Raise awareness of special considerations for standards contributors
- Point to relevant guides and manuals available from the IEEE Fellow Committee and IEEE SA

References can contact FelCom to:

- Summarize the Fellow evaluation criteria
- Describe how References are used in the Fellow elevation process
- Offer guidance for strong Reference input
- Clarify distinction between References and Endorsers

Endorsers can contact FelCom to:

- Summarize the Fellow evaluation criteria
- Describe how References are used in the Fellow elevation process
- Offer guidance for strong Endorser input
- Clarify distinction between References and Endorsers
- Emphasize the added weight of endorsements for standards contributors with achievements that may not be publicly available.

IEEE TAB Committee on Standards / IEEE Fellow Committee Webinar

“Deeper Dive” on the IEEE Fellow Nomination Process & Standards Contributor Category

- The IEEE Technical Activities Board Committee on Standards (TAB CoS) and the IEEE Fellow Committee recently presented a webinar entitled “From Nomination to Recognition: Navigating the IEEE Fellow Journey with Industry Experts in Standards”
- The webinar will be posted on the IEEE TAB CoS Resource Center soon at <https://resourcecenter.tcos.ieee.org/>.



IEEE

*Advancing Technology
for Humanity*

